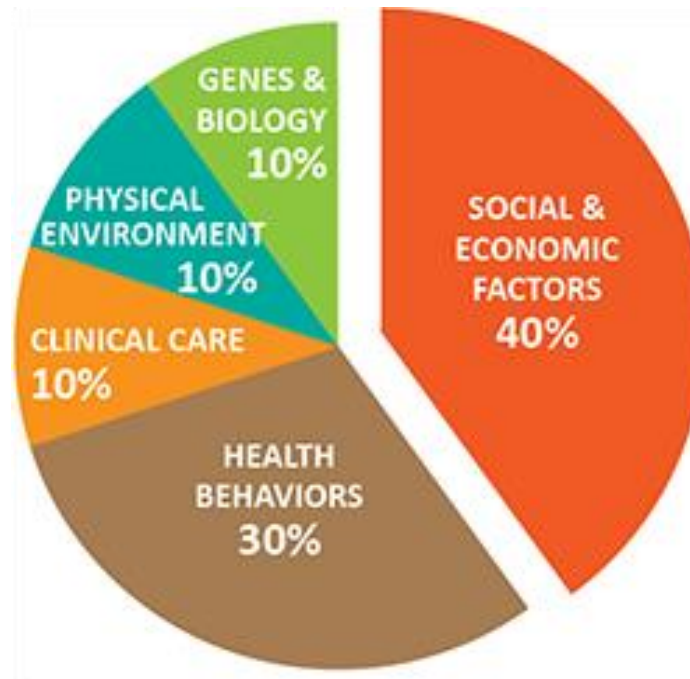


Making the Health/Wealth Connection

How are health and finances connected in your work?

What Factors Contribute to Our Health?



Source: Minnesota Department of Health

Social Determinants of Health

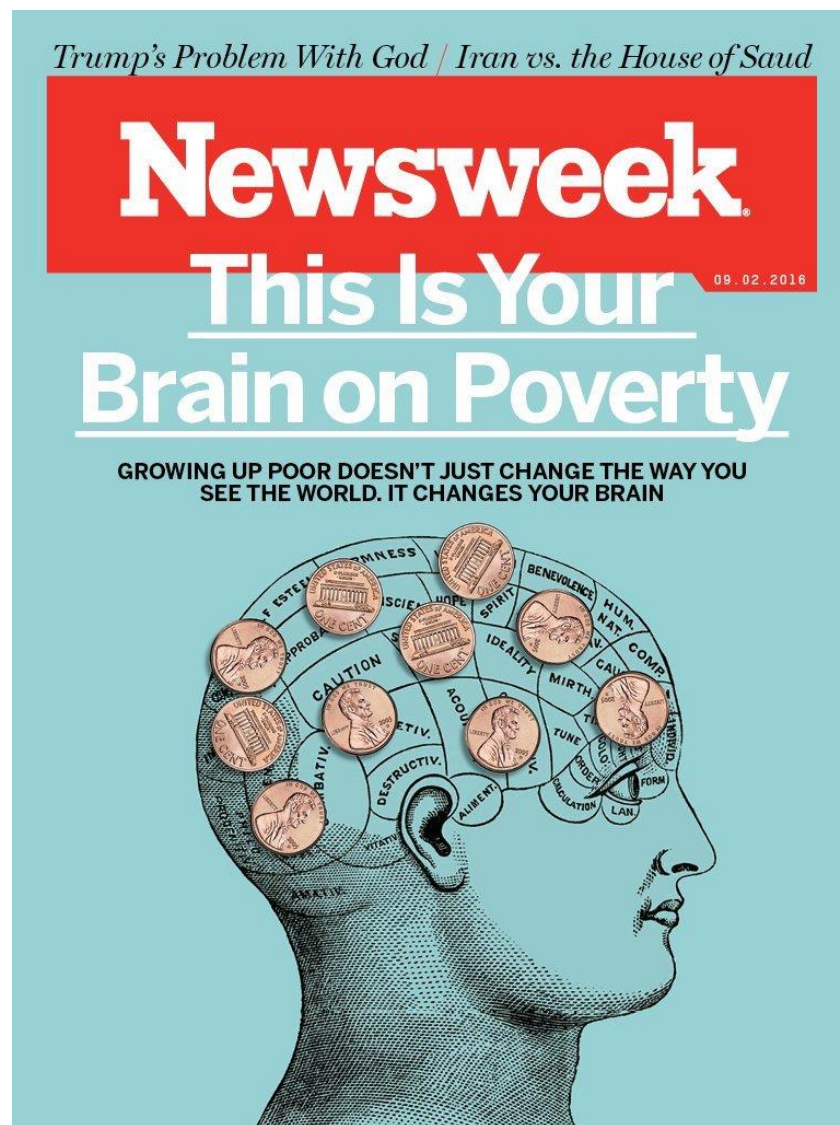
- The conditions in which people are born, grow, live, work and age



Source : Healthy People 2020

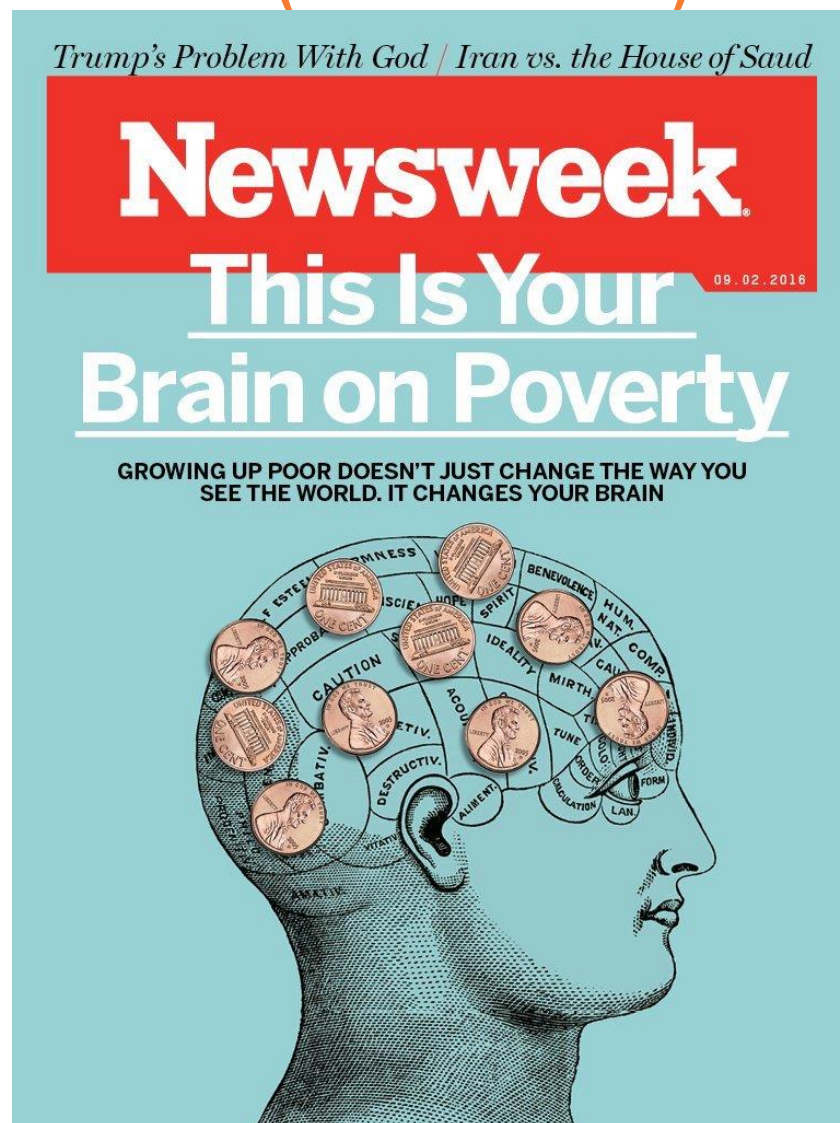
Health Effects of Financial Stress

- Physical Health
 - Immune System
 - Inflammation
 - Fight or Flight Response
 - Brain Development

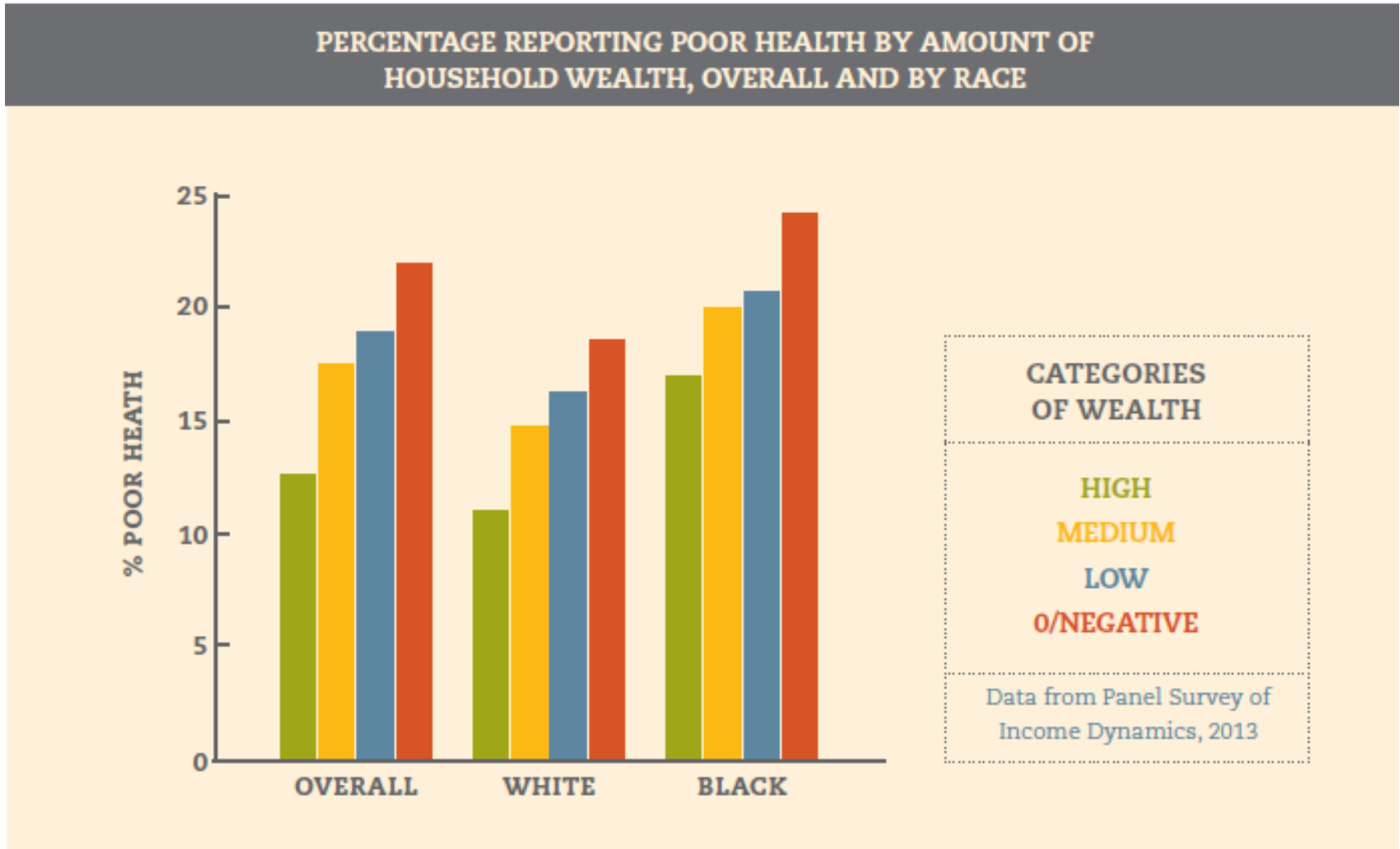


Health Effects of Financial Stress (Continued)

- Mental Health
 - Anxiety and depression
 - Ability to manage health
- Behavioral Health
 - Smoking

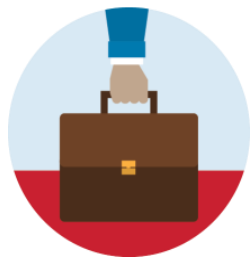


Your Wealth = Your Health



Source: Asset Funders Network, “The Health and Wealth Connection.”

Connections to Other Determinants



Investing in Health

- Beyond healthcare, investments in these fundamental drivers of health outcomes are needed to foster healthier individuals and communities

Neighborhood and Built Environment

- Healthy, affordable housing units

Economic Stability

- Workforce programs
- Emergency savings programs
- Retirement savings
- Community tax preparation

Health and Healthcare

- Health clinics
- Community health workers

Education

- Children's savings
- Adult literacy programs

Social and Community Context

- Neighborhood development
- After school programs

Opportunities to Effect Change

1. Enhance service delivery partnerships
2. Broaden coalitions
3. Change systems

Where do you see opportunities for further collaboration with the health field?

Thank You!

- Parker Cohen

- Associate Director, Savings and Financial Capability
- pcohen@cfed.org
- 202-207-0159